

*Landscape* by  **MDS**  
Marshalls Design Studio





**MDS** is committed to creating unique, high-quality wallcoverings using the latest technologies and premium substrates. With a strong focus on both domestic and export markets, MDS aims to redefine interior spaces through innovation, artistry, and superior craftsmanship.

If you live by international trends or like to outsource creative thinking to the best, leave it to our master designers at MDS, and browse through their expansive and breathtaking collections. Our memorable compilations to choose from already - Sanskriti, Funtime, Ombre, Florina, Modern Art, The Artist, Prakriti, Polo and many more, each designed artistically with a central theme.

MDS specializes in creating designs for Hotel projects, Retail chains, Educational Institutes, Corporates amongst others. This specialization coupled with the high end digital printing infrastructure of Marshalls brings together mesmerizing results on the walls.

Marshalls Design Studio from India's #1 wallcoverings brand - Marshalls, is shaping the future of wallcoverings - one wall at a time.

#### Certified for a Greener Tomorrow

At Marshalls Design Studio, sustainability isn't just a commitment—it's a standard we uphold in every product we offer. We're proud to feature globally recognized certifications that reflect our focus on health, safety, sustainability and environmental responsibility:



Our products are certified for reduced environmental impact. The ECOLABEL certification ensures that our materials meet stringent, lifecycle-based environmental performance standards.



We care about indoor air quality. GREENGUARD® Gold certification means our products are rigorously tested to ensure low chemical emissions, making them safe for homes, schools, and healthcare environments.



Efficiency meets performance. ENERGY STAR® certified solutions contribute to lower energy usage and reduced carbon footprint, ensuring our practices stay future-focused.



It helps identify products that meet comprehensive environmental criteria across their lifecycle from design to end-of-life. It's a mark of accountability.

## Landscape

Marshalls introduces Landscape – the collection inspired by nature. The astounding beauty of Mother Nature's canvas, that would otherwise only exist in one's memory and imagination – now recreated to transform your walls into breathtaking vistas. Of meadows and woods, blue skies and fluffy clouds, water bodies and mountains, sunrises, trees, birds, flowers, foliage... Lets bring the outdoors, indoors.





LDS 101



LDS 102







LDS 103



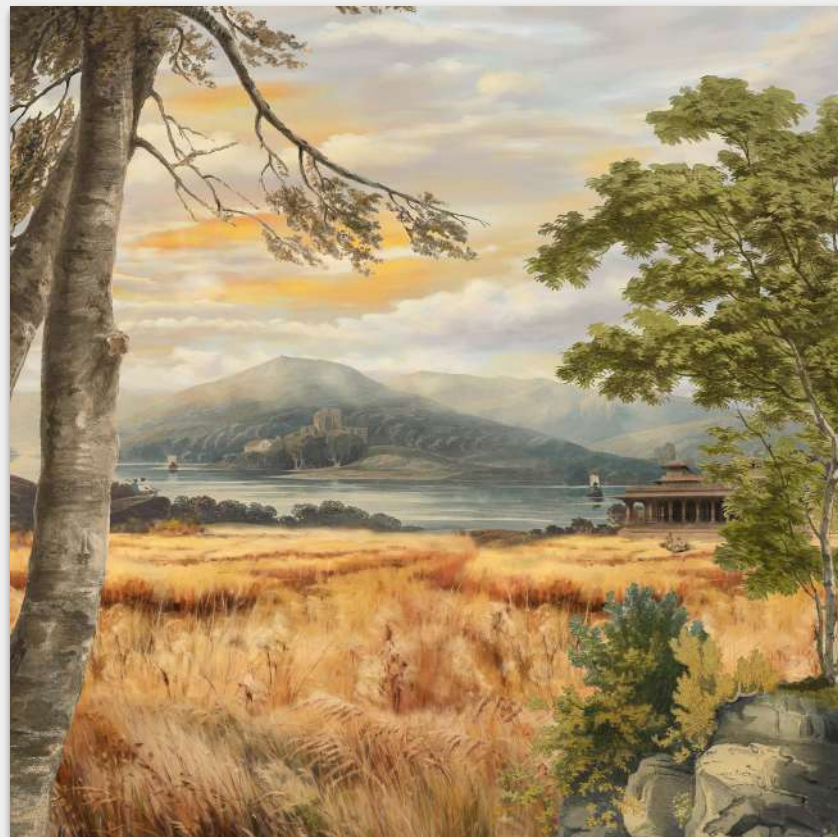
LDS 104





LDS 105





LDS 106







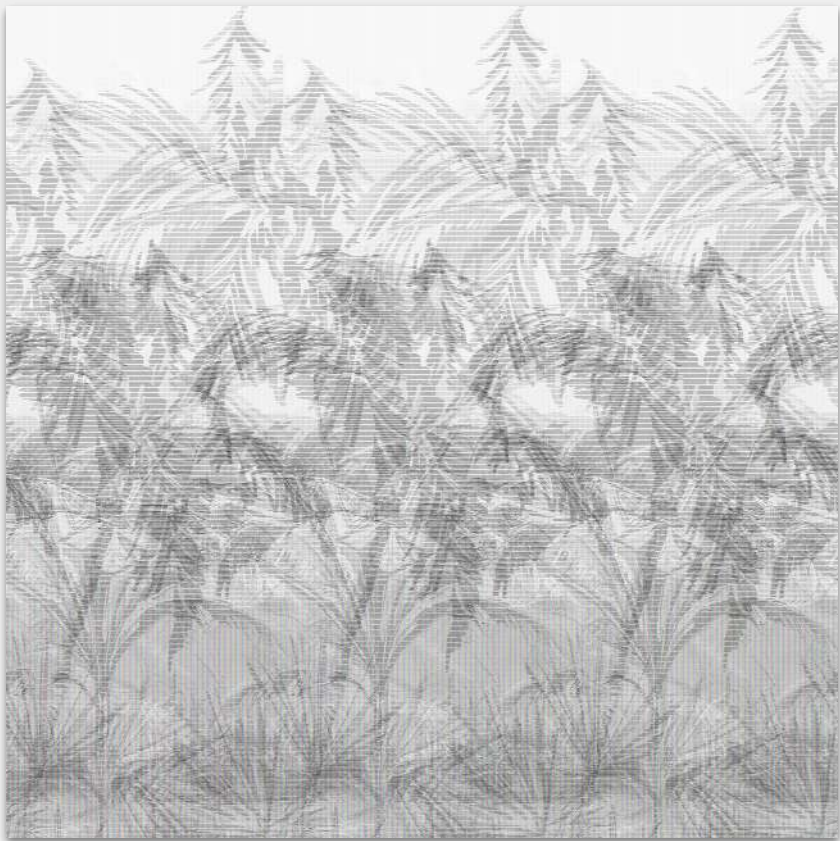
LDS 107



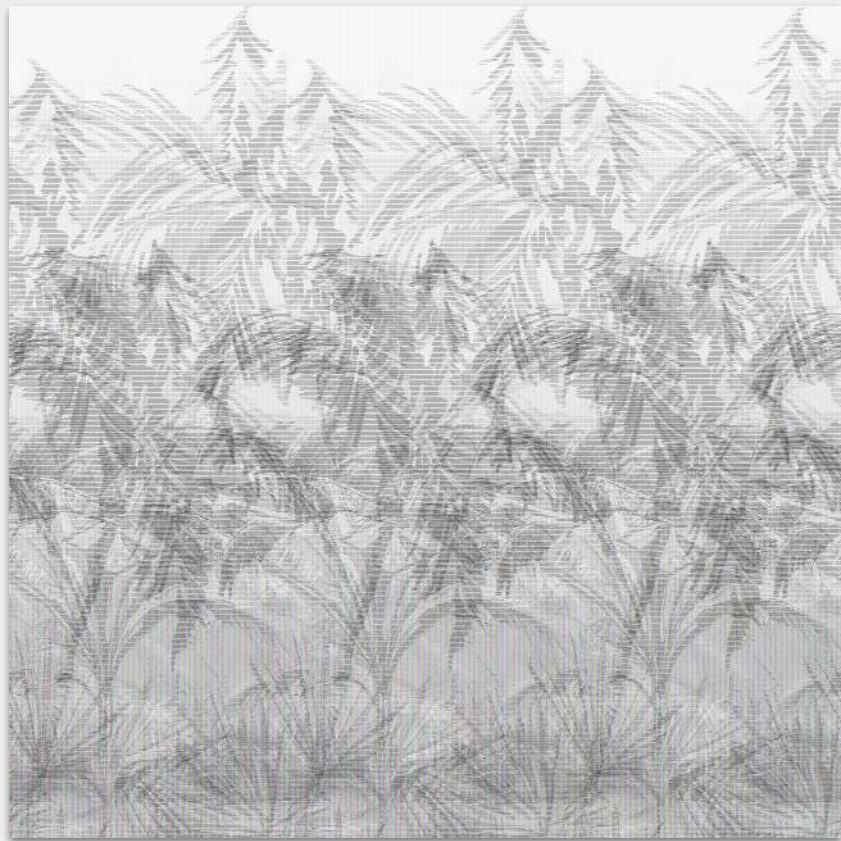
LDS 108







LDS 109



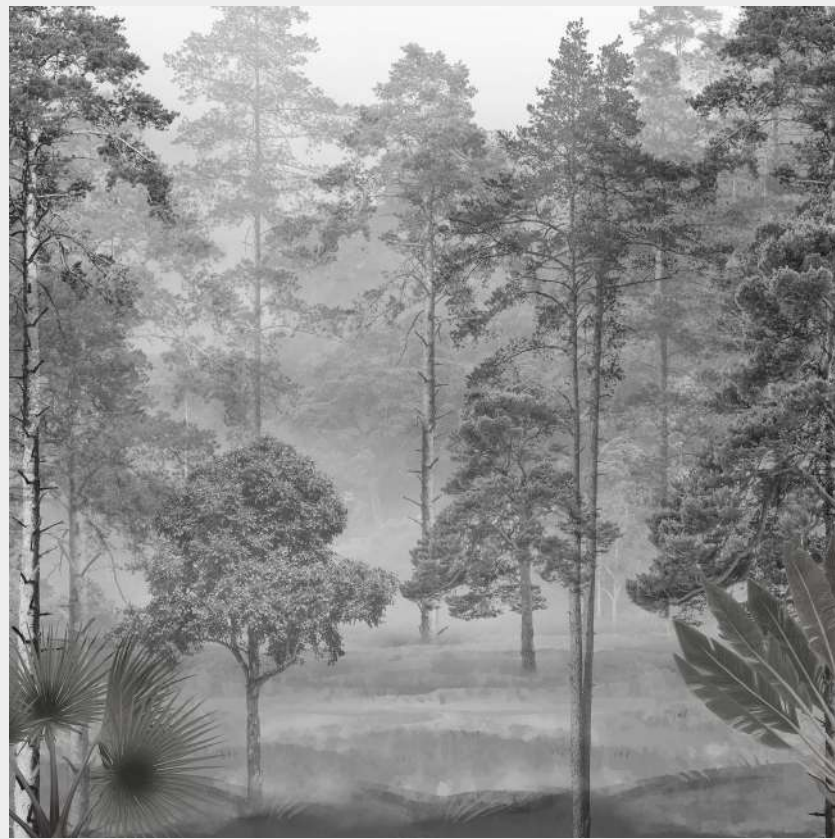
LDS 110







LDS 111



LDS 112







LDS 113



LDS 114







LDS 115



LDS 116







LDS 117



LDS 118







LDS 119



LDS 120







LDS 121



LDS 122





LDS 123





LDS 124







LDS 125



LDS 126





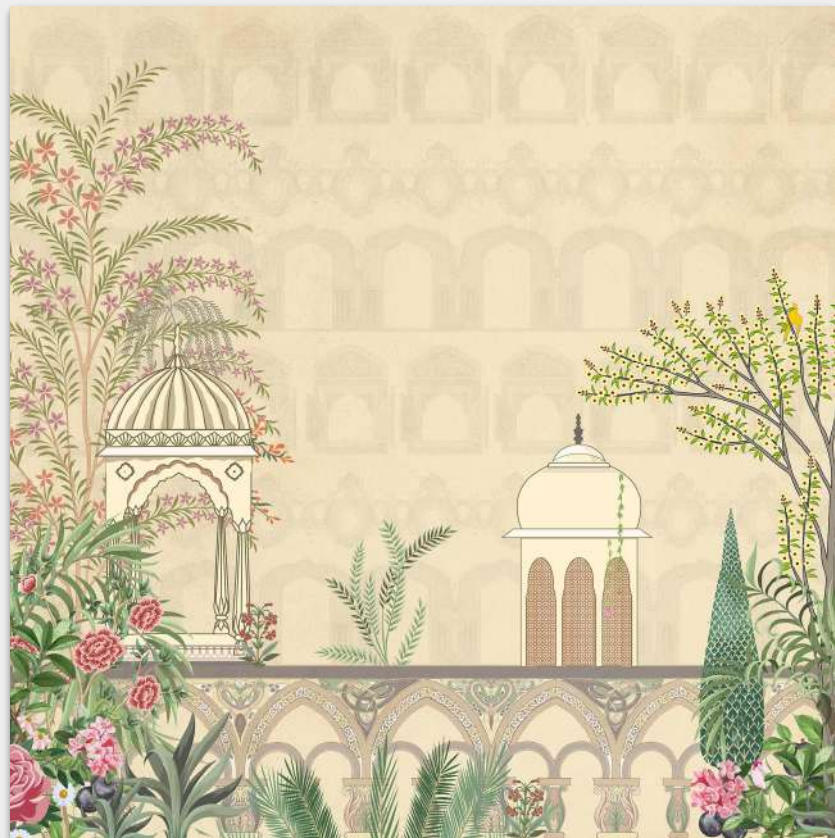
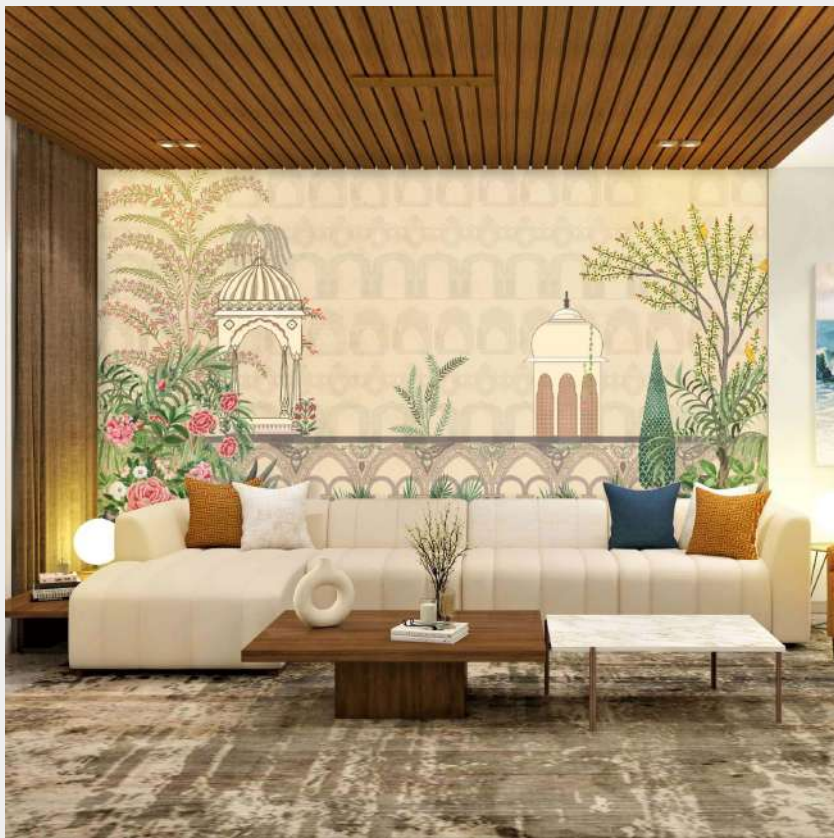


LDS 127



LDS 128





LDS 129





LDS 130





LDS 131





LDS 132





LDS 133







LDS 134



LDS 135





LDS 136





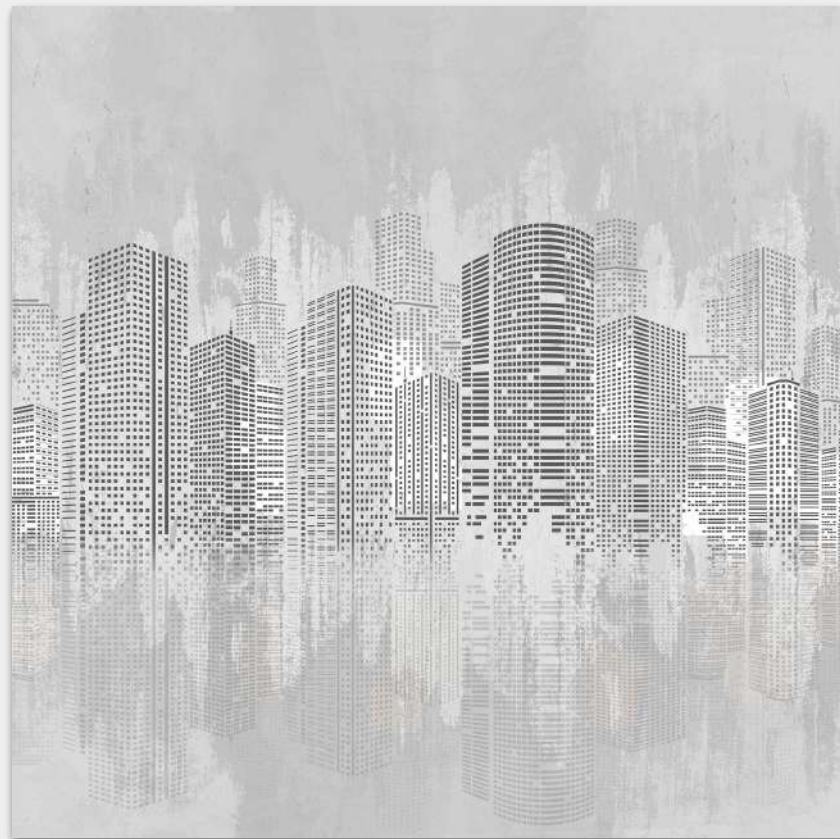
LDS 137







LDS 138



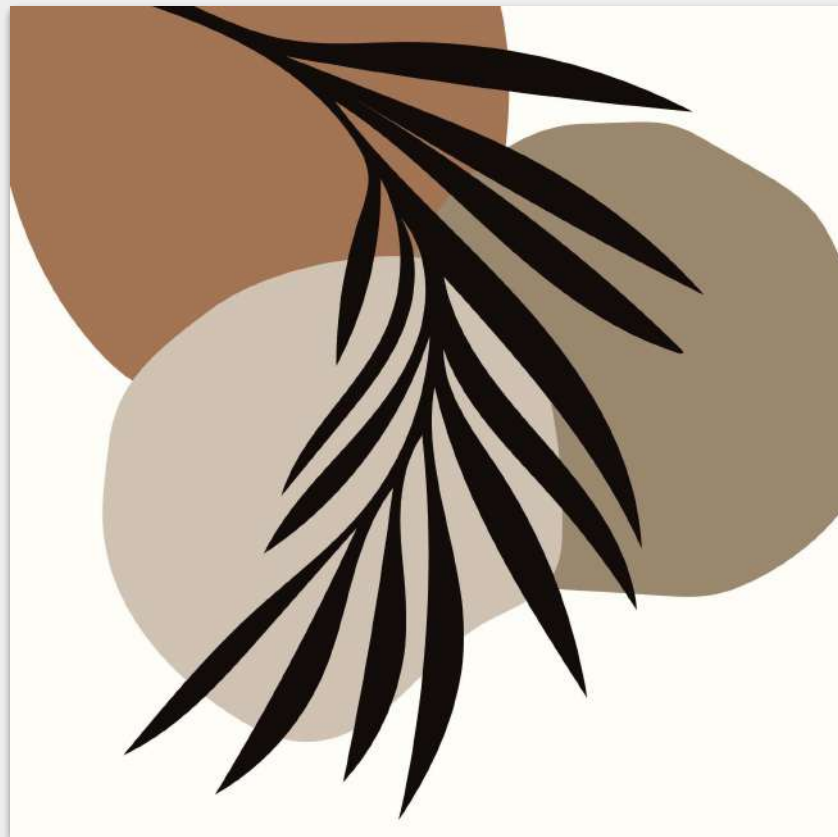
LDS 139





LDS 140





LDS 141





LDS 142



## INNOVATIVE BORDERS



BOR 101  
7.62 cm / 3"



BOR 102  
7.62 cm / 3"



BOR 103  
7.62 cm / 3"



## INNOVATIVE BORDERS



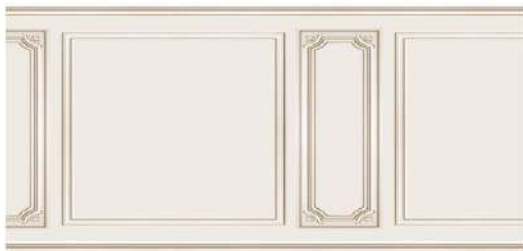
BOR 104  
7.62 cm / 3"



BOR 105  
7.62 cm / 3"



# INNOVATIVE DADOES



DDS 101  
W 10 m x H 75 CM



DDS 102  
W 10 m x H 75 CM



# INNOVATIVE DADOES



DDS 103  
W 10 m x H 75 CM



DDS 104  
W 10 m x H 75 CM



## *Technical Specifications*

The Arts & Customised Digital Wallcoverings developed by Marshalls Design Studio (MDS) with a flexibility to accommodate the designs as per your wall size.

### **Product Specifications**

- Imported Non-woven, Vinyl Textures with paper backing digitally printed with eco-friendly water based inks
- Sponge washable
- Colour- fast
- Recommended for interiors use as highlighters
- Minimum order quantity per design 2 sqm and then in multiples of 0.5 sqm.
- Width per panel may vary from 36 - 59 inches i.e. 1.49 mtr.
- ₹ 1000 is charged extra towards resizing of designs in any ratio apart from of 3:2 and 1:1
- The image will be emailed to client for approval before printing

### **Measurement**

- Standard design is in 1:1 ratio. Any other ratio is also provided as per customer requirement. However converting into other ratios may result in some variations from the original image. Final image with the dimensions asked for will be emailed to the client for approval.
- In case the client does not go ahead with print then a processing charge of ₹ 1000 is levied
- All orders will be accepted in square meters only
- Take due care that 3 cms additional is taken in height and width on any one side
- Design once printed cannot be rejected or cancelled. Full payment is payable

### **Delivery Time**

- Production time is 2 working days on approval of resized design by the customer.

### **USP of Marshalls Digital Printed Wallcoverings :**

- We print the wallcoverings with a 8-10 pass process using original imported inks thereby ensuring vibrant and long lasting colours.
- The surfaces we print on are imported from Europe ensuring the highest quality of printing perfection.

Manufactured with pride by



**marshalls**  
India's No.1 Wallcoverings



[WWW.MARSHALLSINDIA.COM](http://WWW.MARSHALLSINDIA.COM)