

BOHEMIA *by* PAYAL SINGHAL[®]

In Collaboration With



MDS
Marshalls Design Studio

PAYAL SINGHAL®



Payal Singhal is a celebrated Indian designer known for her work focussing on modern Indian bridal and occasion wear. Through her designs, tradition is shown with a renewed outlook to give every collection present-day relevance. With this philosophy in mind, the hallmark of each Payal Singhal ensemble is easy transition from traditional to non-traditional settings. Her signature aesthetic is contemporary and minimalistic but with a vintage heart.

With a passion to bring to the world an all-encompassing taste of her work, the brand of Payal Singhal has been growing into a coveted lifestyle brand with new ventures in the fields of décor, weddings, stationery and more.

Born in Mumbai, Payal Singhal was drawn to sketching and designing from an early age. She created her first couture look at the age of 15 and her talent received much adulation. Singhal graduated in fashion design from SNDT Women's University, Mumbai. She further pursued courses from the Parsons School of Design and the Fashion Institute of Technology in New York before launching her label in 1999.



Marshalls Design Studio (MDS) is where design imagination meets manufacturing mastery. Born from five decades of Marshalls Wallcoverings' legacy, MDS brings together artistry, technology, and craftsmanship to create wall and surface solutions that transform spaces into experiences.

MDS is committed to creating unique, high-quality wallcoverings using the latest technologies and premium substrates. With a strong focus on both domestic and export markets, MDS aims to redefine interior spaces through innovation, artistry, and superior craftsmanship.

We think like designers, execute like manufacturers, and deliver like a service company – seamlessly blending custom creativity with production precision. Every collection reflects our belief that walls are not just boundaries, but expressions of identity, culture, and emotion.

MDS specializes in creating designs for Hotel projects, Retail chains, Educational Institutes, Corporates amongst others. This specialization coupled with our high end digital printing infrastructure brings together mesmerizing results on the walls.

From bespoke digital murals to curated wallpaper collections, our work celebrates the beauty of design made in India, for the world. MDS is shaping the future of wallcoverings - one wall at a time.



Our products are certified for reduced environmental impact. The ECOLOGO® certification ensures that our materials meet stringent, lifecycle-based environmental performance standards.



We care about indoor air quality. GREENGUARD® Gold certification means our products are rigorously tested to ensure low chemical emissions, making them safe for homes, schools, and healthcare environments.



Efficiency meets performance. ENERGY STAR® certified solutions contribute to lower energy usage and reduced carbon footprint—ensuring our practices stay future-forward.



It helps identify products that meet comprehensive environmental criteria across their lifecycle—from design to end-of-life. It's a mark of eco-conscious innovation.

BOHEMIA

“

Our first collection was focused on more traditional and classic prints. We've gone more eclectic and quirky with this line

”

Contemporary Indian occasion wear designer Payal Singhal is best known for her signature aesthetic that reinterprets age-old Indian silhouettes through a modern lens. Her design DNA is equal parts vintage and bohemian, thereby creating a language that is a merger of something old and something new.

Payal's second collection of wallpapers with Marshall's taps into her more playful sensibility. The series, aptly called 'Bohemia', features a range of her bestselling #PSPrints that are whimsical, bold and drenched in colour. "Our first collection was focused on more traditional and classic prints. We've gone more eclectic and quirky with this line," she says.

The collection will resonate with the house-proud aesthete looking to inject colour and vibrancy to their space. Each original #PSPrint has been developed after months of research, and boasts its own unique storyline.

Turkish

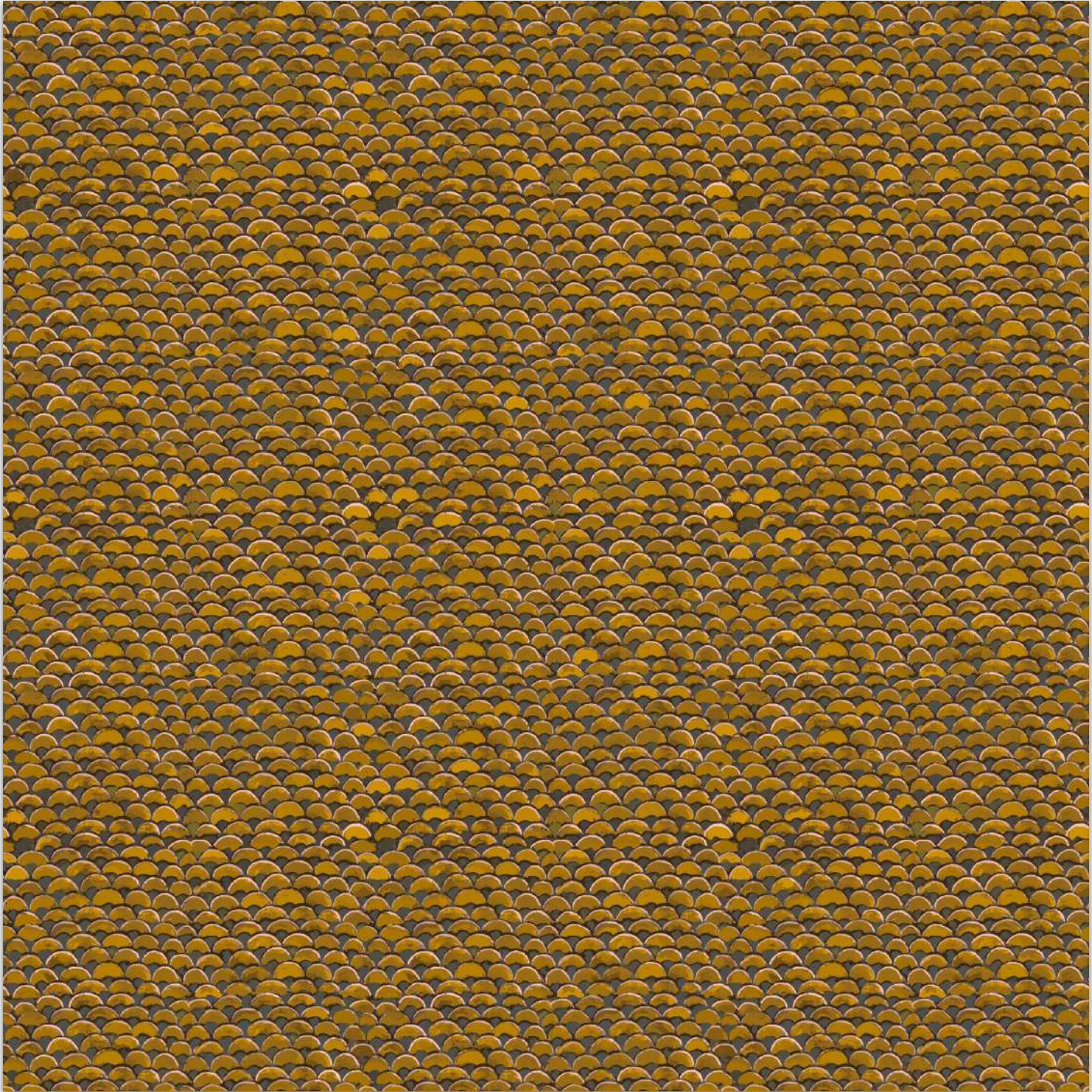
Turkey has served as an enduring inspiration for the designer who looks at classical wall and textile art from the region for this print.





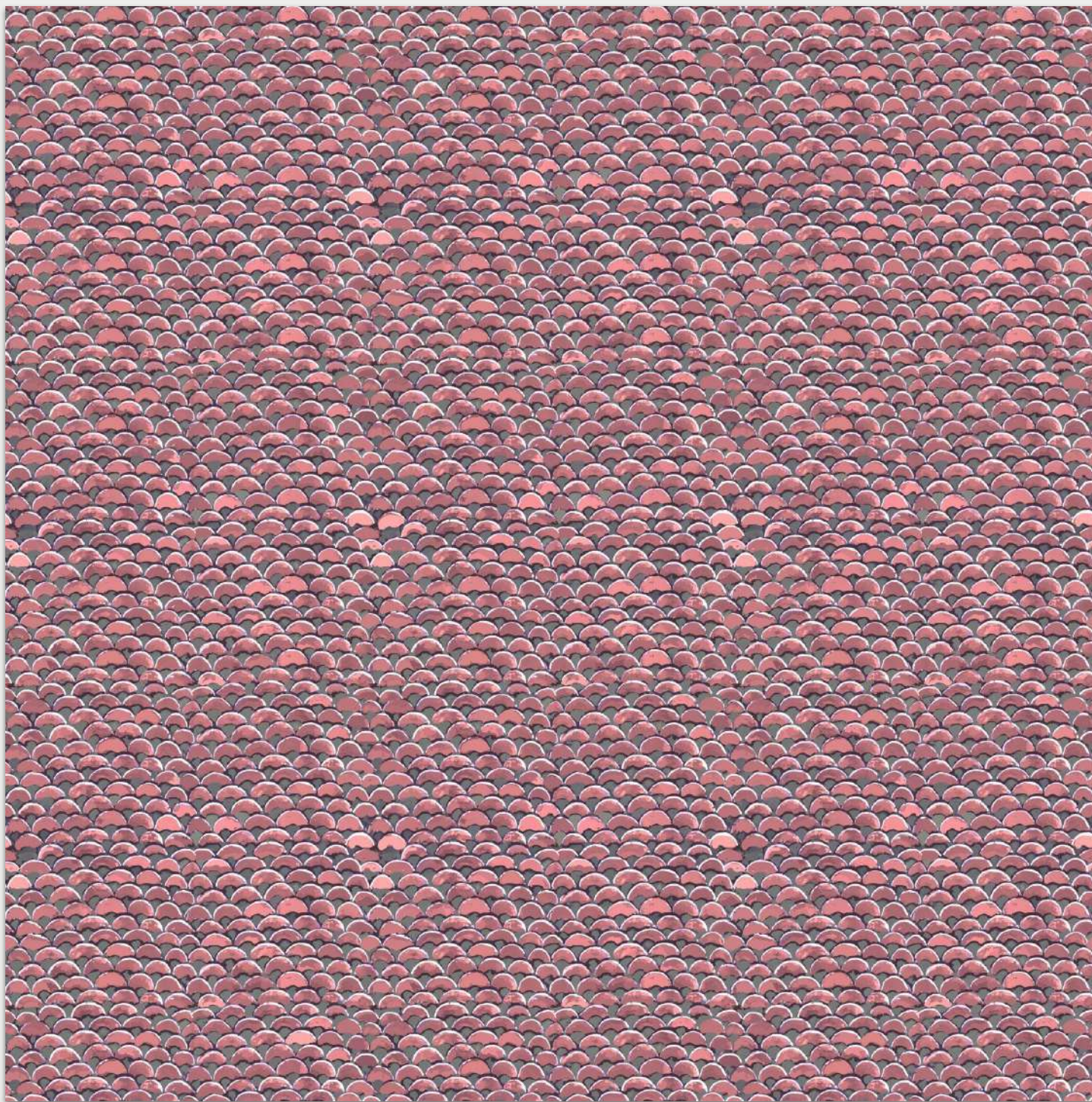
PS 201





PS 202





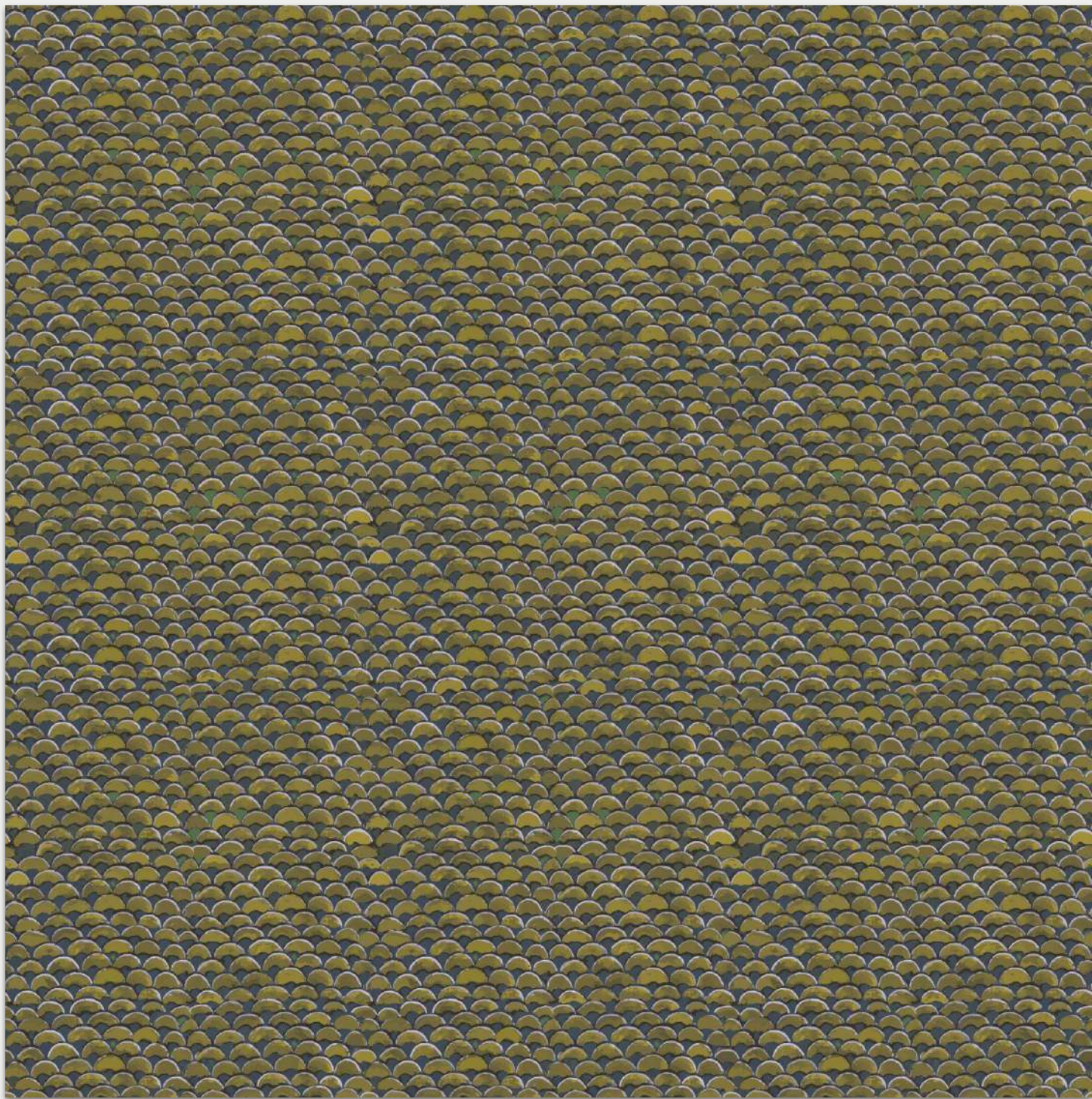
PS 203





PS 204





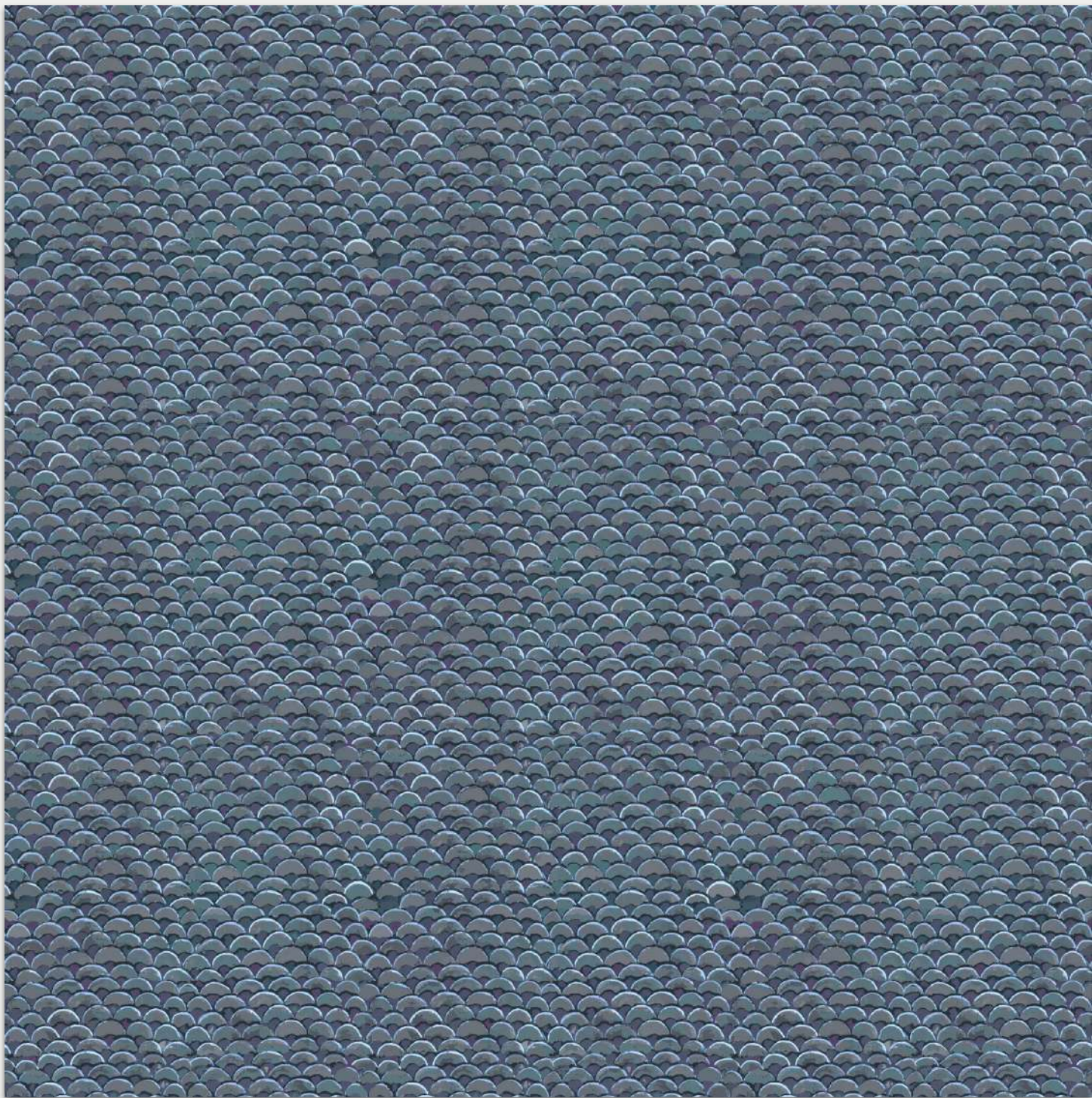
PS 205





PS 206





PS 207





PS 208



African

Indian gond art meets tribal African motifs in this print that is a celebration of diverse cultures coming together





PS 209





PS 210





PS 211



Bee Garden

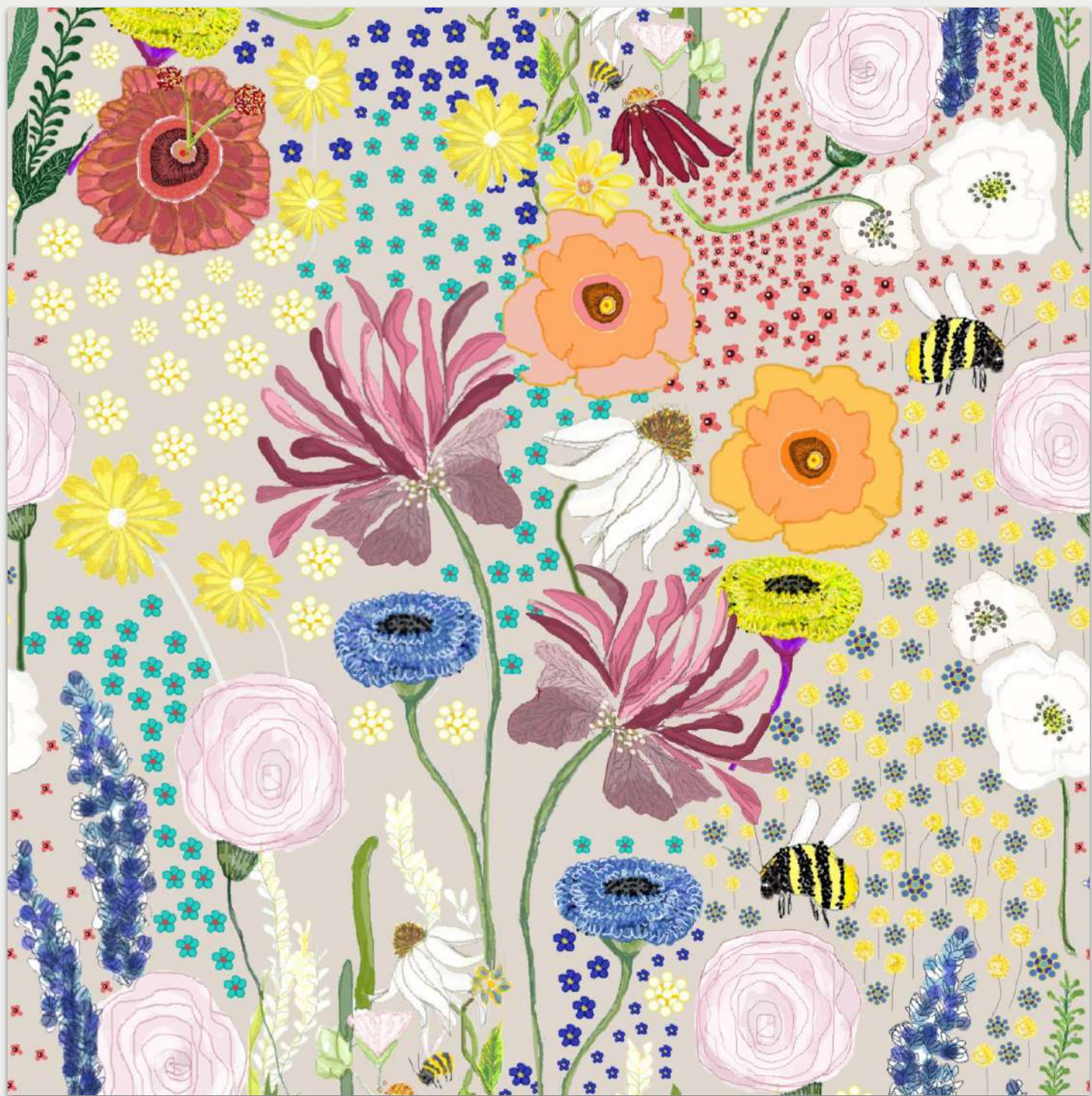
The hand painted pattern captures the playful charm of a spring garden in full bloom.





PS 212





PS 213





PS 214





PS 215





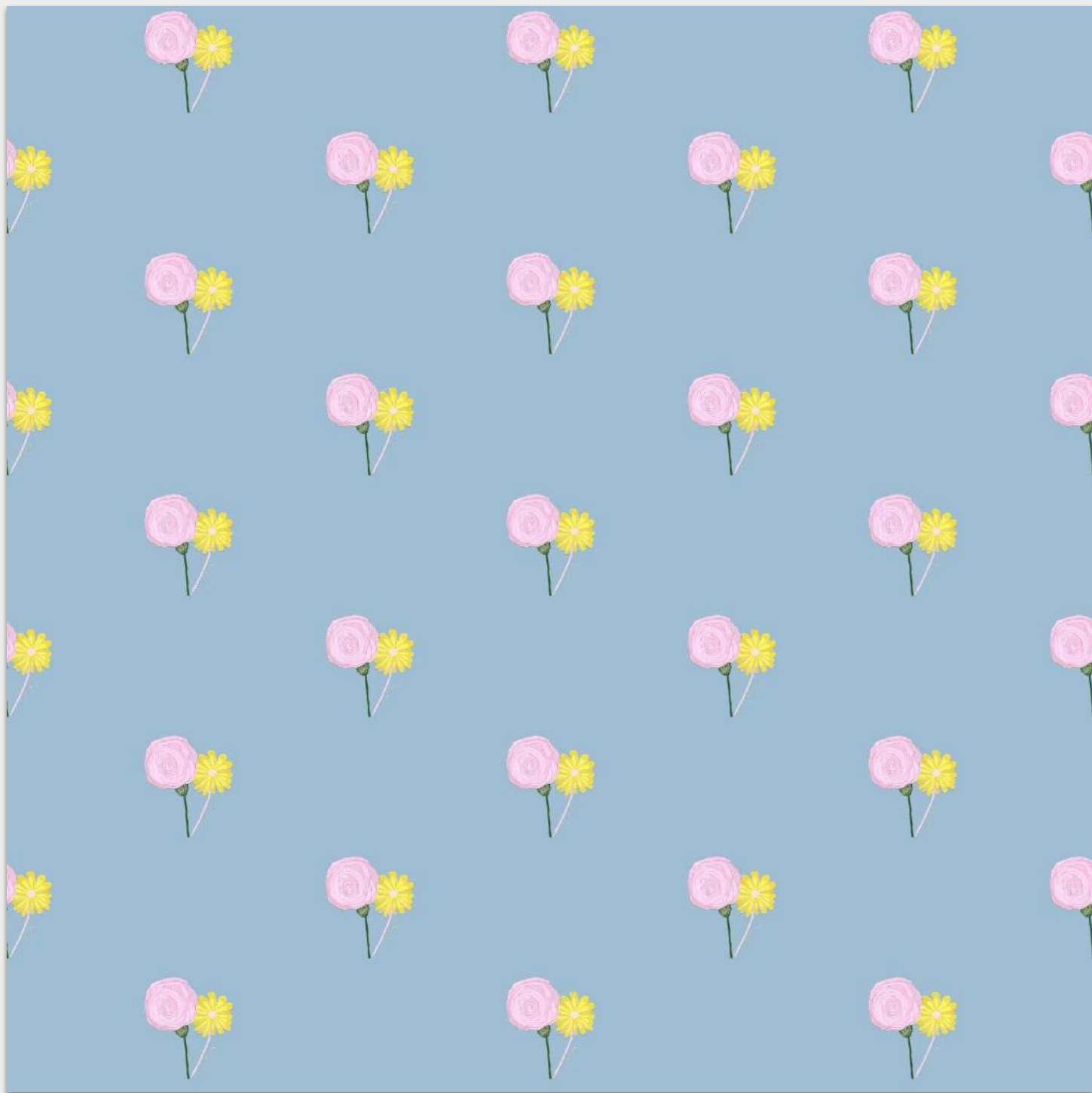
PS 216





PS 217





PS 218





PS 219



Retro Redux

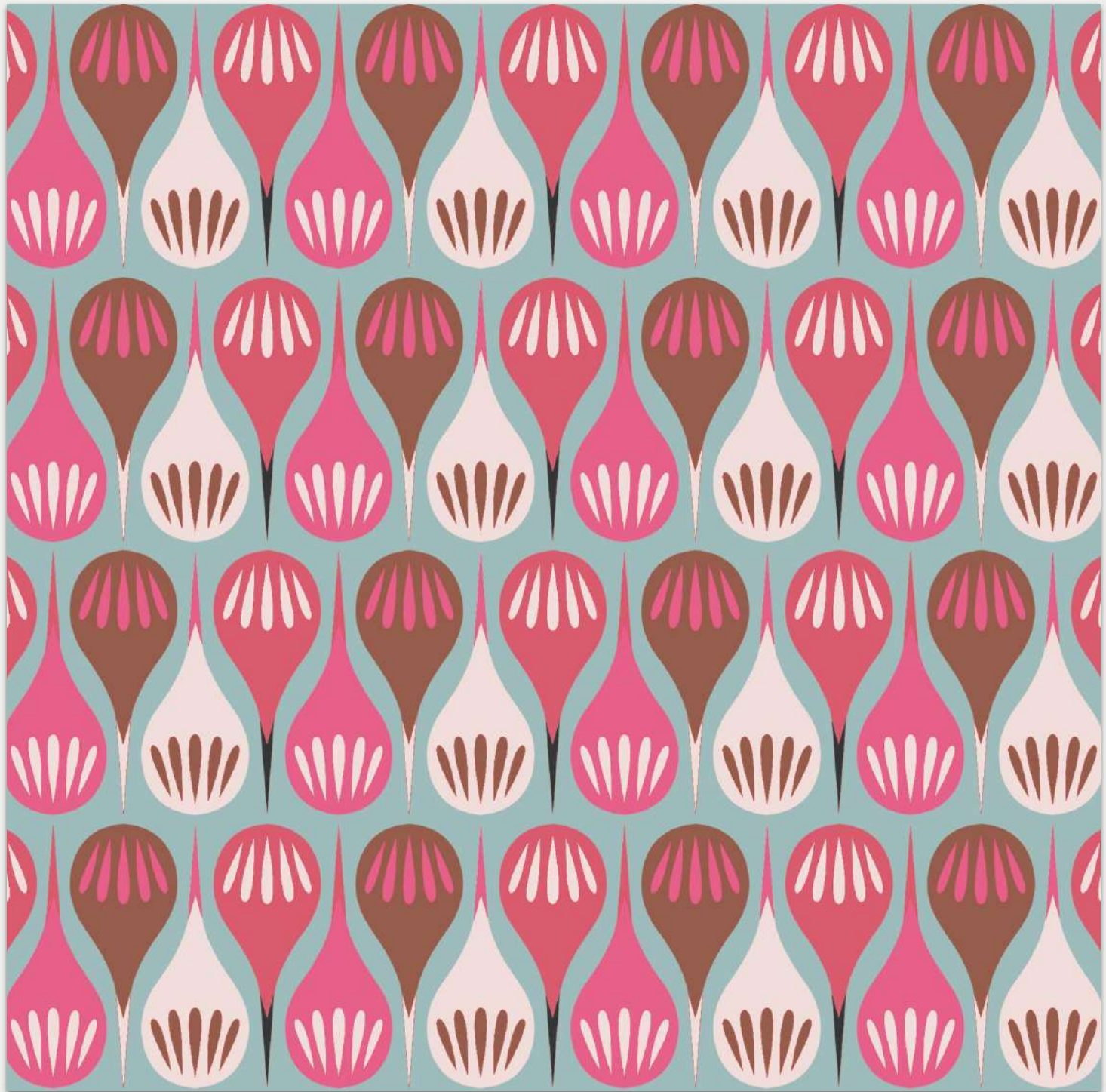
Travel back in time with this art deco-inspired print that is reminiscent of design trends in the 1950s.





PS 220





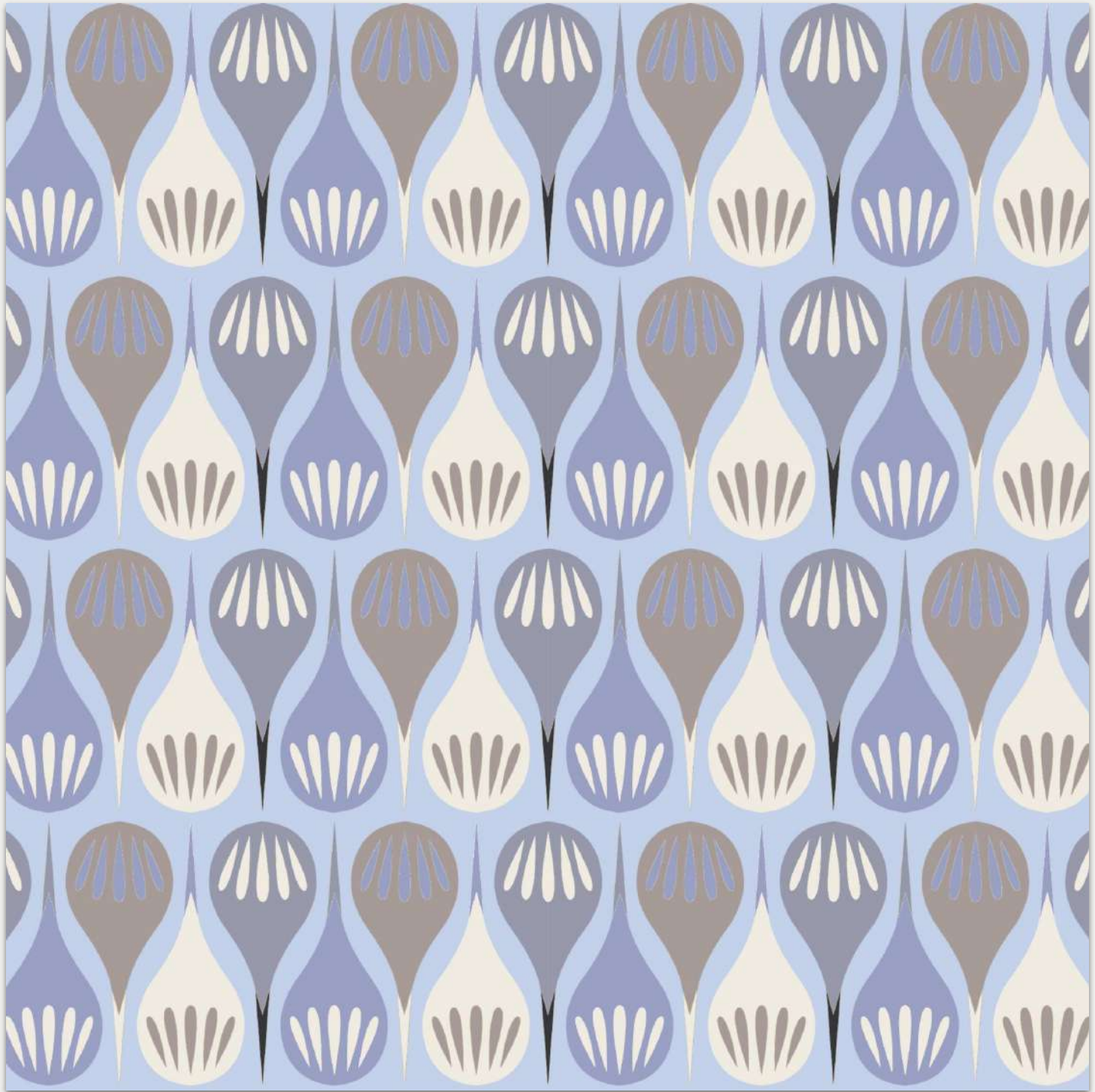
PS 221





PS 222





PS 223





PS 224



Floral Spring Garden

A whimsical interpretation of a flower garden, dressed in vibrant saturated tones.





PS 225





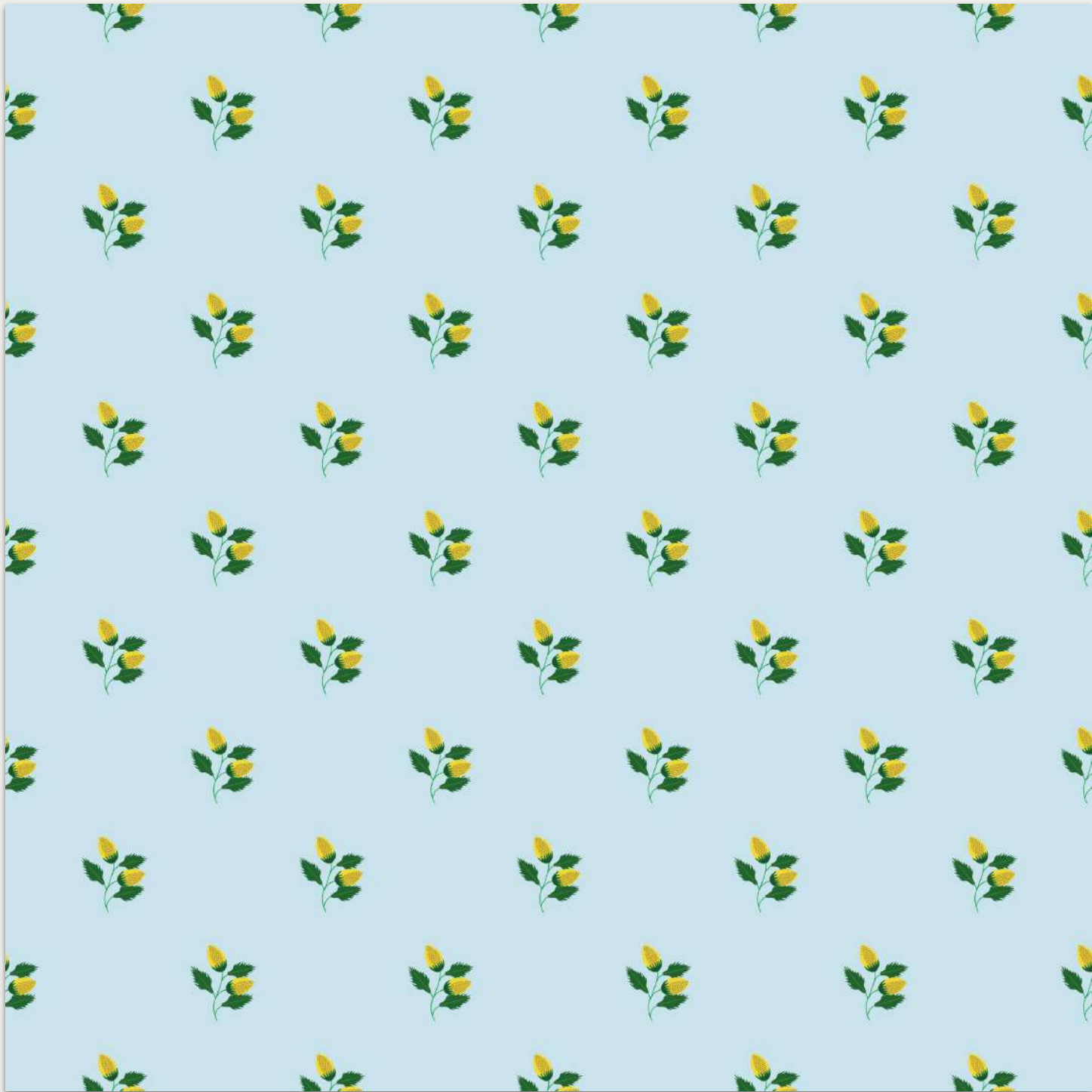
PS 226





PS 227





PS 228





PS 229





PS 230





PS 231



Terrazzo

The classic terrazzo print moves from your floors to your walls with this pastel print in macaroon shades





PS 232





PS 233





PS 234





PS 235



Monogram

The hand-drawn print in noir tones is the first pattern featuring the Payal Singhal monogram.





PS 236





PS 237





PS 238





PS 239



The Palm

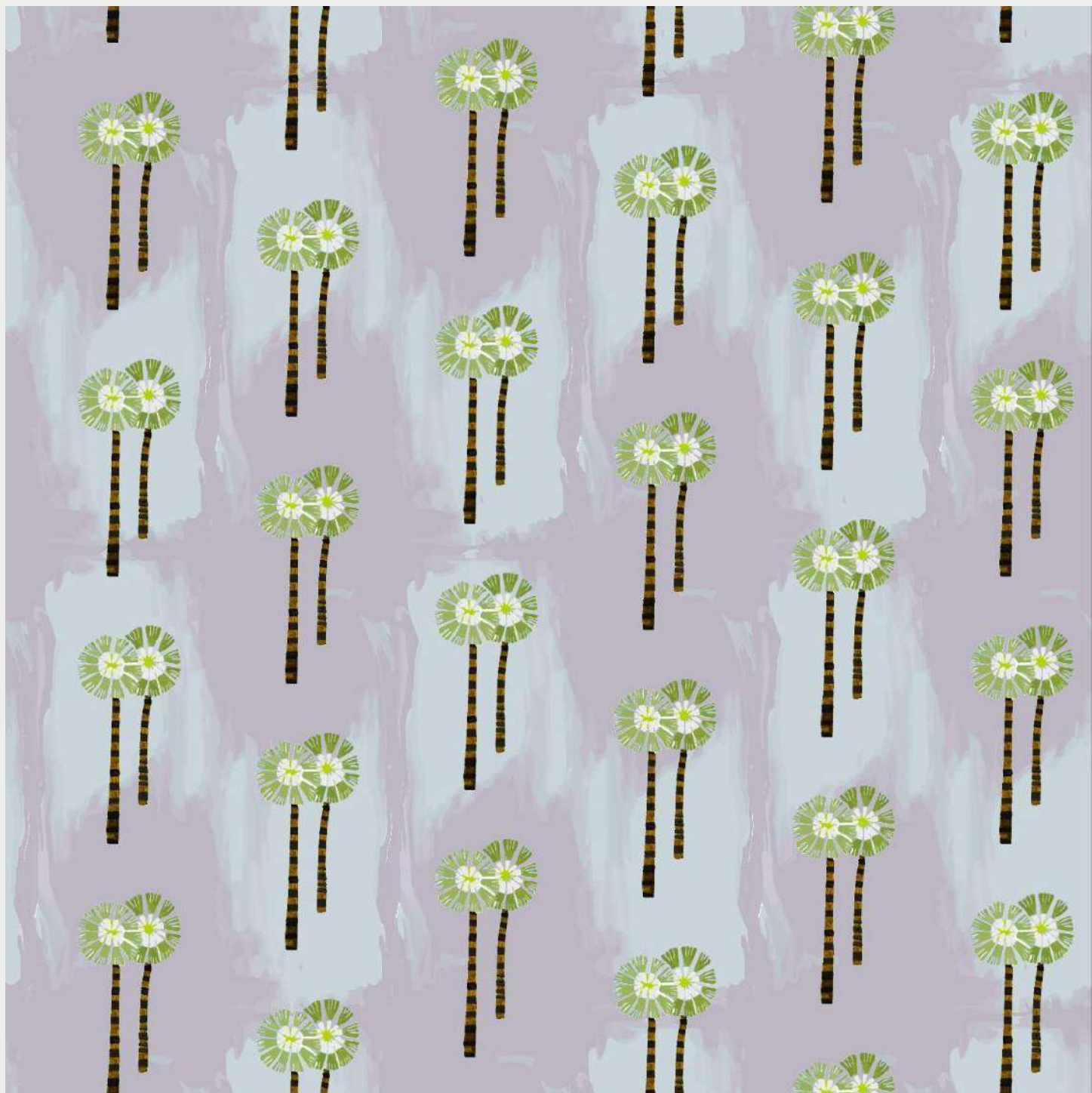
Nothing spells a tropical summer like this print designed in cool, soothing tones.





PS 240







PS 242





Kuno | The print is a depiction of the Kuno wildlife sanctuary in Madhya Pradesh, but reimagined in the style of miniature folk art.



102 CM



102 CM 102 CM 102 CM
1 2 3





PSP 251



PSP 252



Manufactured with pride by



marshalls
India's No.1 Wallcoverings



WWW.MARSHALLSINDIA.COM